

Company Mission Statement:

The goal of our company is to provide a quality product with our attention focused on precision manufacturing and a commitment to absolute detail coupled with a strong dedication to providing exemplary service to our customers and the retail public.

Made in U.S.A.



Absolute Brake® is a securing device for the Emergency Parking Brake for vehicles equipped with Air Brake Systems:

- Prevents the Brake System from being accidentally released
- Serves as a theft-deterrent device with use of the Master Pad lock®
- Easily applied and removed within seconds
- Made from aluminum round stock and machined on a CNC milling machine to exact tolerances and specifications
- Finished product is gold anodized



AB600L applied to an International ProStar Tractor (includes the Master Lock® which provides added security when the vehicle is unattended)

“My dog hit the emergency brake, which of course released it, and my Motorhome rolled across the In & Out Burger parking lot right into the trash enclosure causing \$10,000 worth of damage!”

Our first reaction upon hearing this was that this man was lucky his Motorhome did not kill anyone! Because we travel often with our dogs in the Motorhome, this became a topic of concern.

We then began noticing many other accounts in the news:

- A child pushes the emergency brake on a school bus full of children, causing the bus to roll down the highway.
- At an RV rally, a child climbs into a Motorhome and pushes the emergency brake, causing the vehicle to roll downhill into a trolley full of people.
- During a mutual aid fire fighting effort, an object in the cab of a Fire Engine falls onto the emergency parking brake causing the vehicle to roll off a cliff.

. . . And the stories keep coming.

ABSOLUTE BRAKE PROVIDES ADDED SECURITY WHEN YOUR VEHICLE IS UNATTENDED!

Absolute Brake®

(805) 371-8825

Info@AbsoluteBrake.com

www.AbsoluteBrake.com

501 I. South Reino Road, Unit 229

Thousand Oaks, CA 91320

**AIR BRAKE
PLUNGER
SECURING
DEVICE**

**COMMERCIAL
TRUCKS**



*Product
Information and
Specifications*

*Safety
Security
Peace of Mind*



ABSOLUTE BRAKE®

“Is your Emergency Air Brake SECURE

In your RV, Bus or Truck?”

Air Brake Plunger Securing Device:

Absolute Brake® created a Lockout/Tagout safety device which prevents the emergency parking brake from accidentally releasing. With the device firmly in place, your unattended vehicle will not roll since the parking brake remains secured. This limits your risk of property damage or personal injury.

How it works:

The device is applied by swiveling it between the base of the air brake controller valve and the plunger knob. Once in place, the spring-loaded plunger keeps the “Air Brake Plunger Securing Device” secured to the shaft of the emergency brake controller valve (the Push/Pull Valve), preventing accidental engagement.

Type of Vehicles that Use the Product:

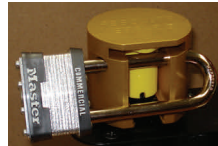
- Recreational Vehicles
- School Buses
- Garbage Trucks
- Fire Engines
- Transit Buses
- Cement Trucks

Safety

Security

Peace of Mind

Product Details



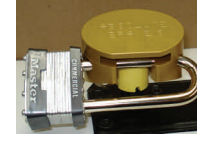
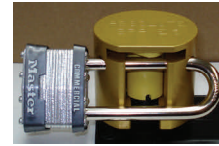
AB400L /AB500L—Master Lock® Included

Specifically designed for the Bendix Emergency Air Brake Push/Pull Controller Valves (PP-DC & MV-3). The MV-3 has two plunger knobs, a yellow knob and a red knob, if equipped. Some truck manufacturers utilize a trim piece that limits the ability for the AB400L & AB500L to work properly.

AB400L - For trucks built before Mid-2008 that have not replaced the original PP-DC or MV-3 Valves. These valves will have a “stop” on the shaft. This valve is still manufactured.

AB500L - For trucks built after Mid-2008 or trucks that have replaced the original PP-DC or MV-3 value with the new design. On the new design, the plastic shaft is smooth and tapered.

It is recommended that you consult the manufacturer of your Truck to verify which Air Brake Controller Valve is being utilized in your vehicle. For more information visit our website or call Absolute Brake® directly.



AB600L—Master Lock® Included

Specifically created to work with the Bendix MV-3 Valve. The AB600L has been designed for the late model International ProStar Tractors. The AB600L follows the contour of the dash and fits snugly between the curved trim piece that surrounds the Push/Pull Valve and the plunger knob.



AB700L—Master Lock® Included

Specifically created to work with Bendix MV-3 & PP-DC Valves. The AB700L is an alternative to the AB400L & AB500L. It is designed for vehicles that only have 1.125 inches to 1.5 inches clearance between the dash and the plunger knob. Accommodates the International WorkStar, TranStar, DuraStar, Kenworth T800 & other models.